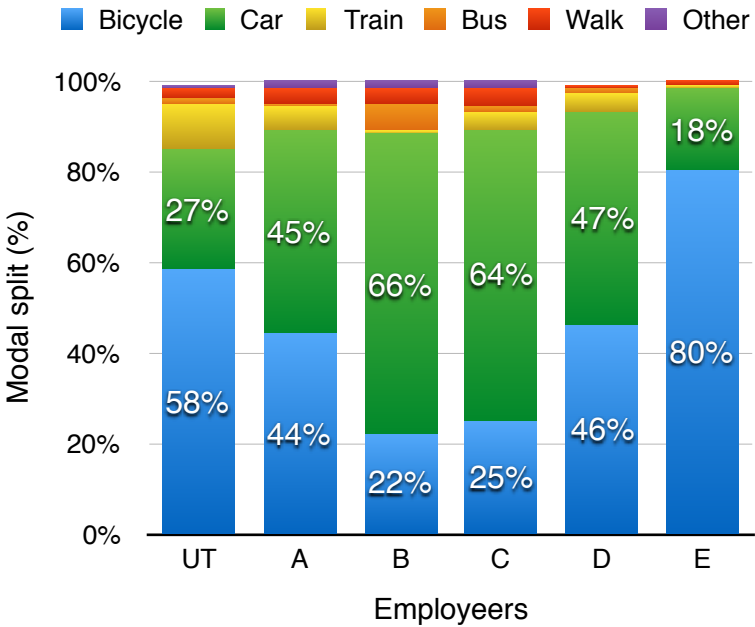


Participation of 1.800 employees wherein 47% men and 53% women



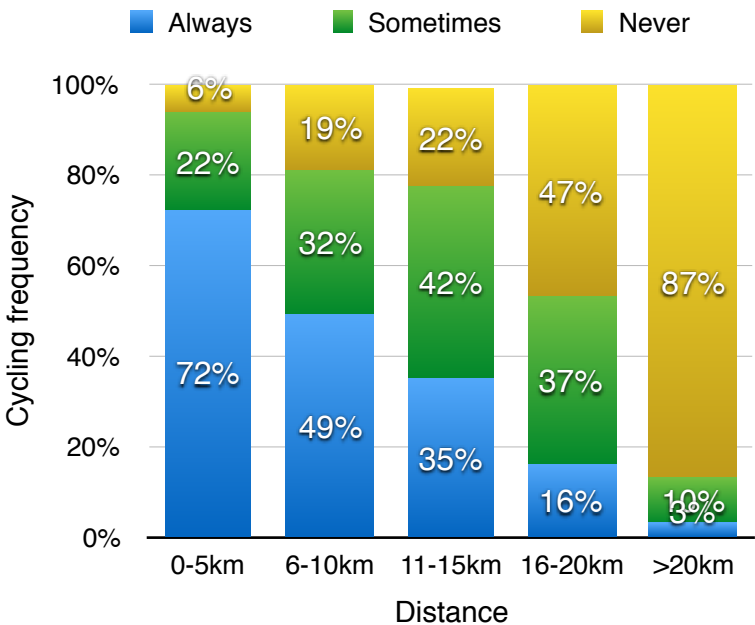
65% of respondents take **less than 30 minutes** to travel to work



Saving travel time is the most important reason for choosing a specific mean of transport



However, cyclists state that **health benefits** is the most important reason to cycle to work



Unpleasant weather conditions are the major deterrent to cycling to work



Most respondents consider cycling **pleasant, refreshing and healthy**

The general feeling about cycling



78%



18%



4%



Employees' preferred reward based on cycling frequency

